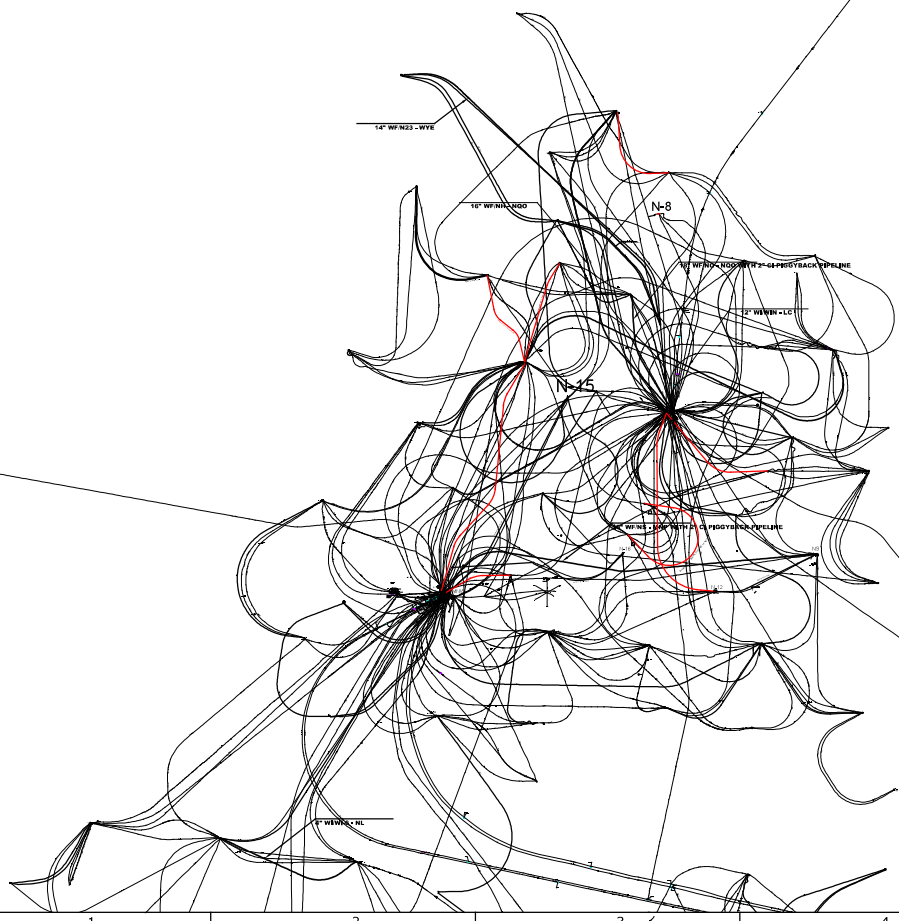
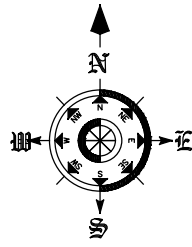


MUMBAI HIGH FIELD

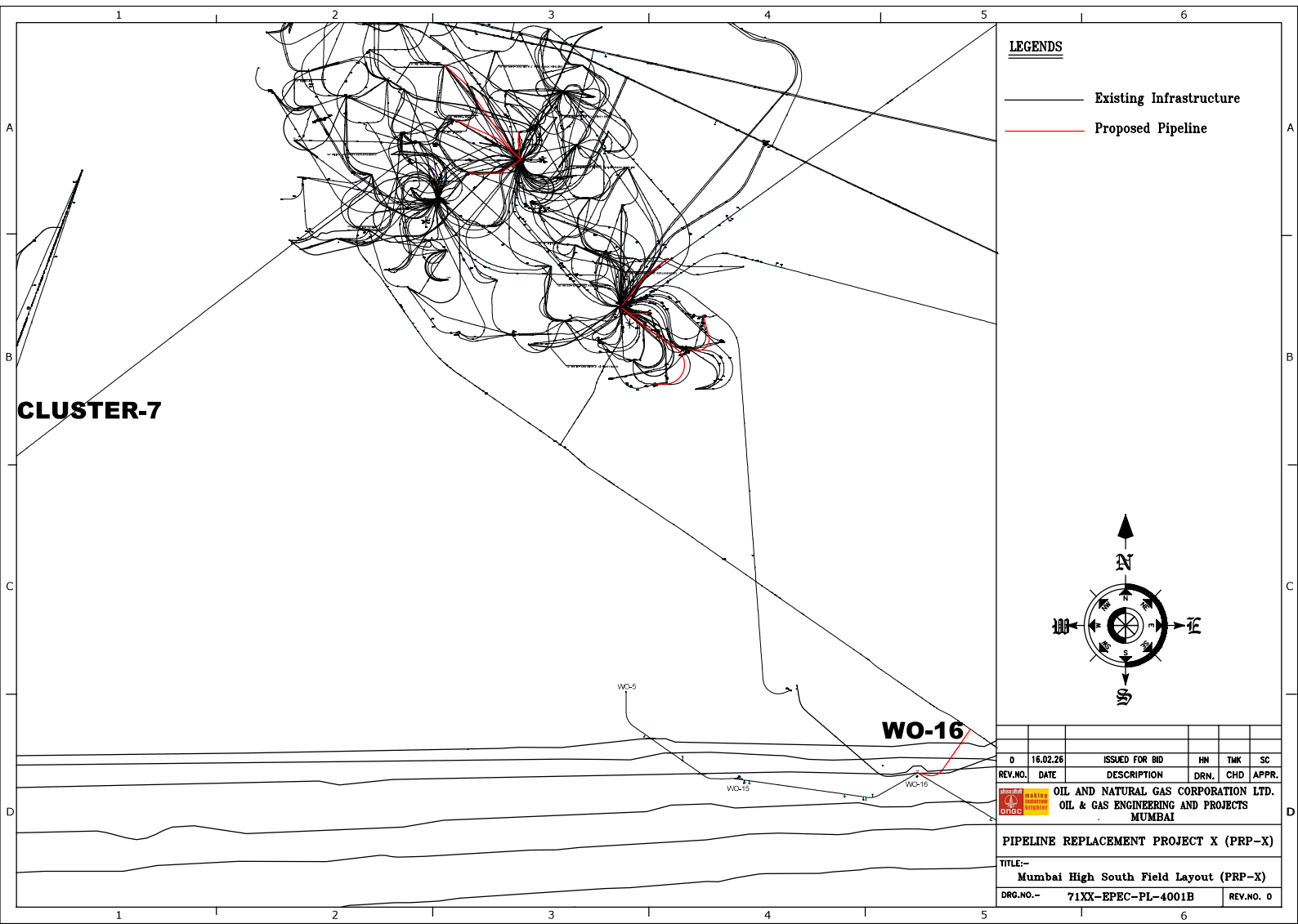


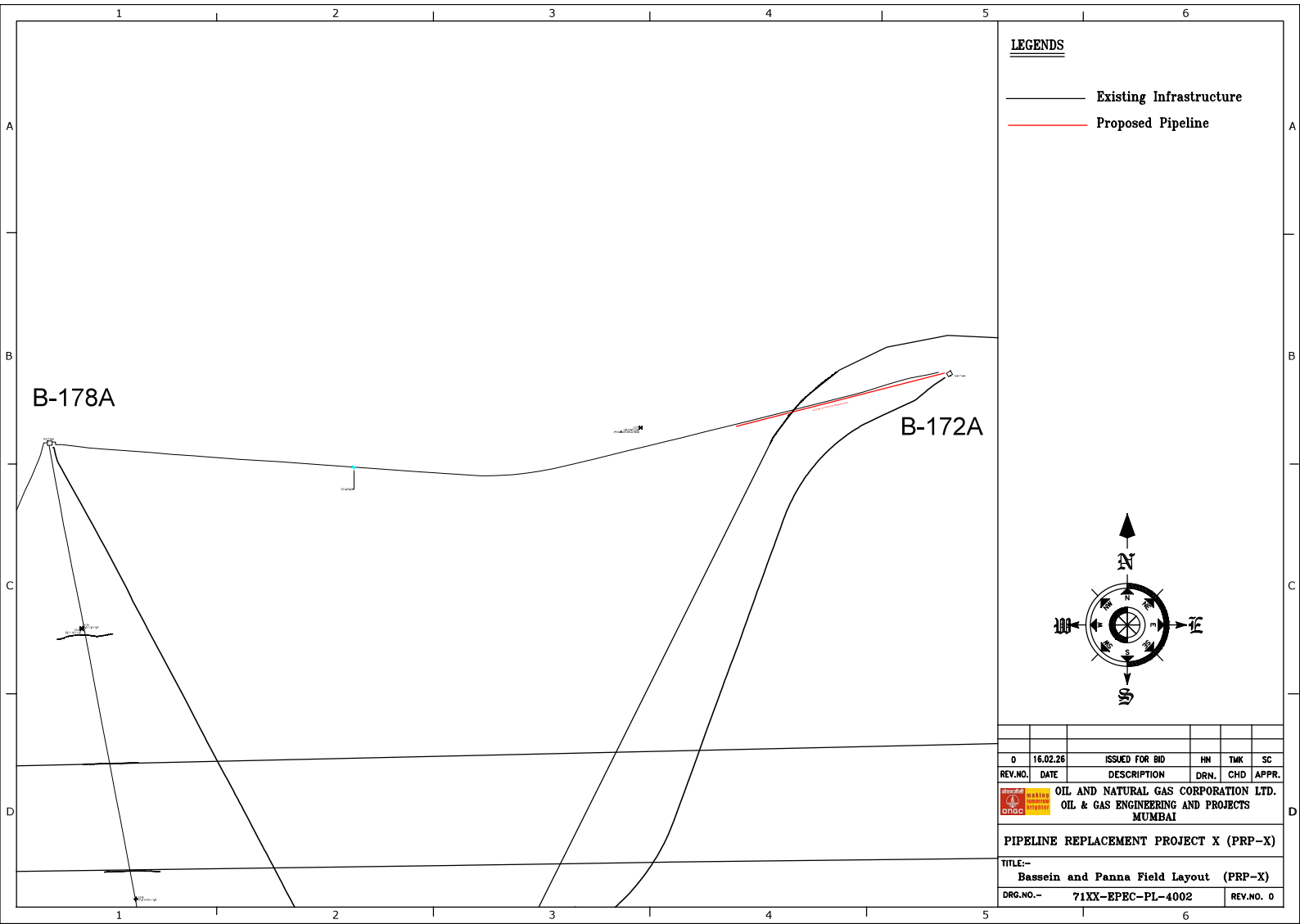
LEGENDS

- Existing Infrastructure
- Proposed Pipeline



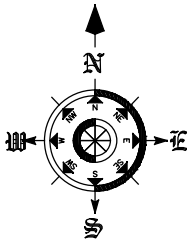
0	16.02.25	ISSUED FOR BID	HN	TMK	SC
REV.NO.	DATE	DESCRIPTION	DRN.	CHD	APPR.
OIL AND NATURAL GAS CORPORATION LTD.					
OIL & GAS ENGINEERING AND PROJECTS					
MUMBAI					
PIPELINE REPLACEMENT PROJECT X (PRP-X)					
TITLE:-					
Mumbai High North Field Layout (PRP-X)					
DRG.NO.-			71XX-EPEC-PL-4001A		REV.NO. 0






LEGENDS

- Existing Infrastructure
- Proposed Pipeline

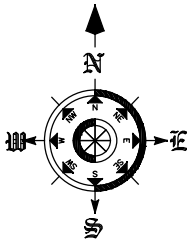


0	16.02.25	ISSUED FOR BID	HN	TWK	SC
REV.NO.	DATE	DESCRIPTION	DRNL	CHD	APPR.
 OIL AND NATURAL GAS CORPORATION LTD. OIL & GAS ENGINEERING AND PROJECTS MUMBAI					
PIPELINE REPLACEMENT PROJECT X (PRP-X)					
TITLE:- Bassein and Panna Field Layout (PRP-X)					
DRG.NO.- 71XX-EPEC-PL-4002				REV.NO. 0	

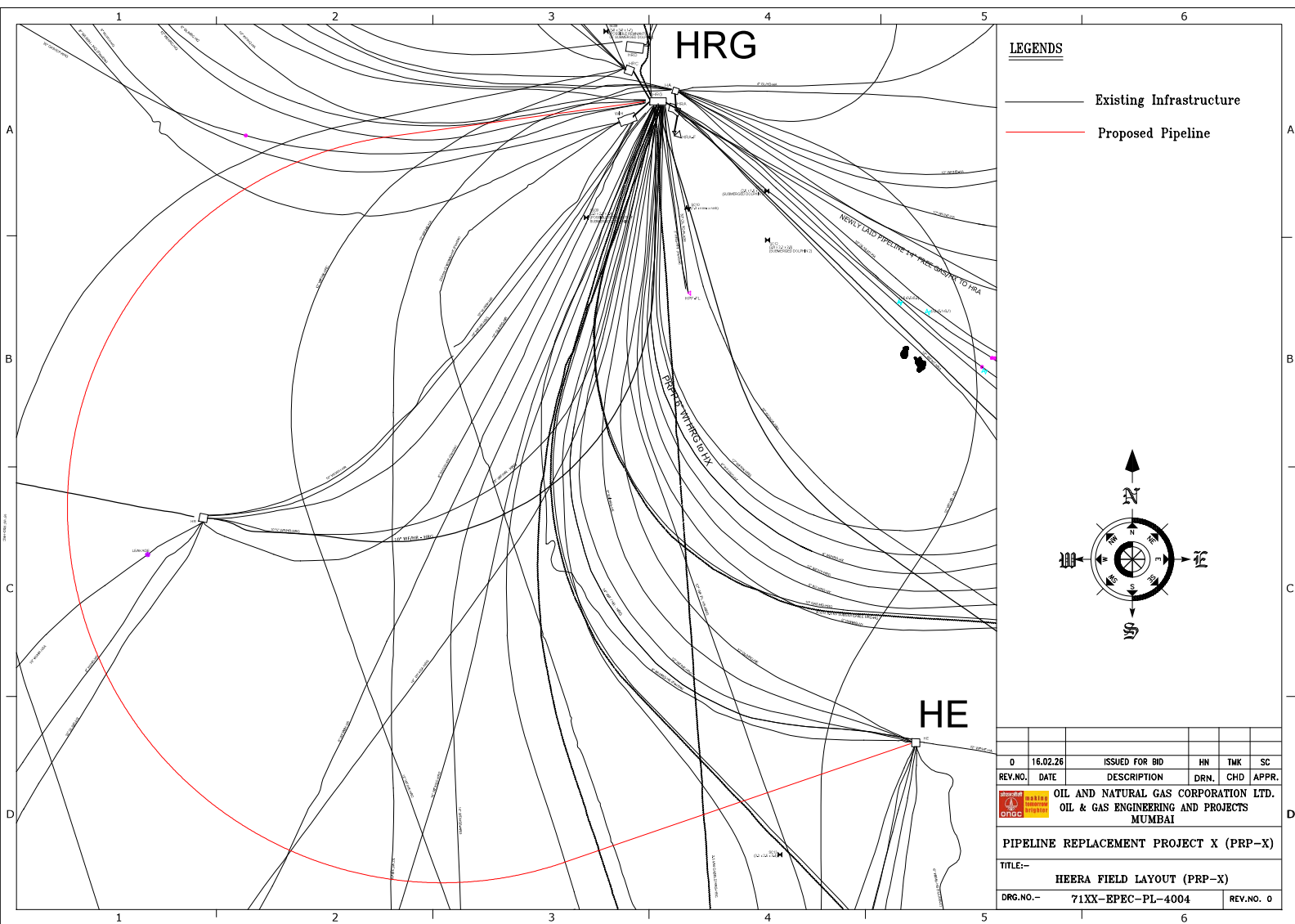
DAMAN FIELD

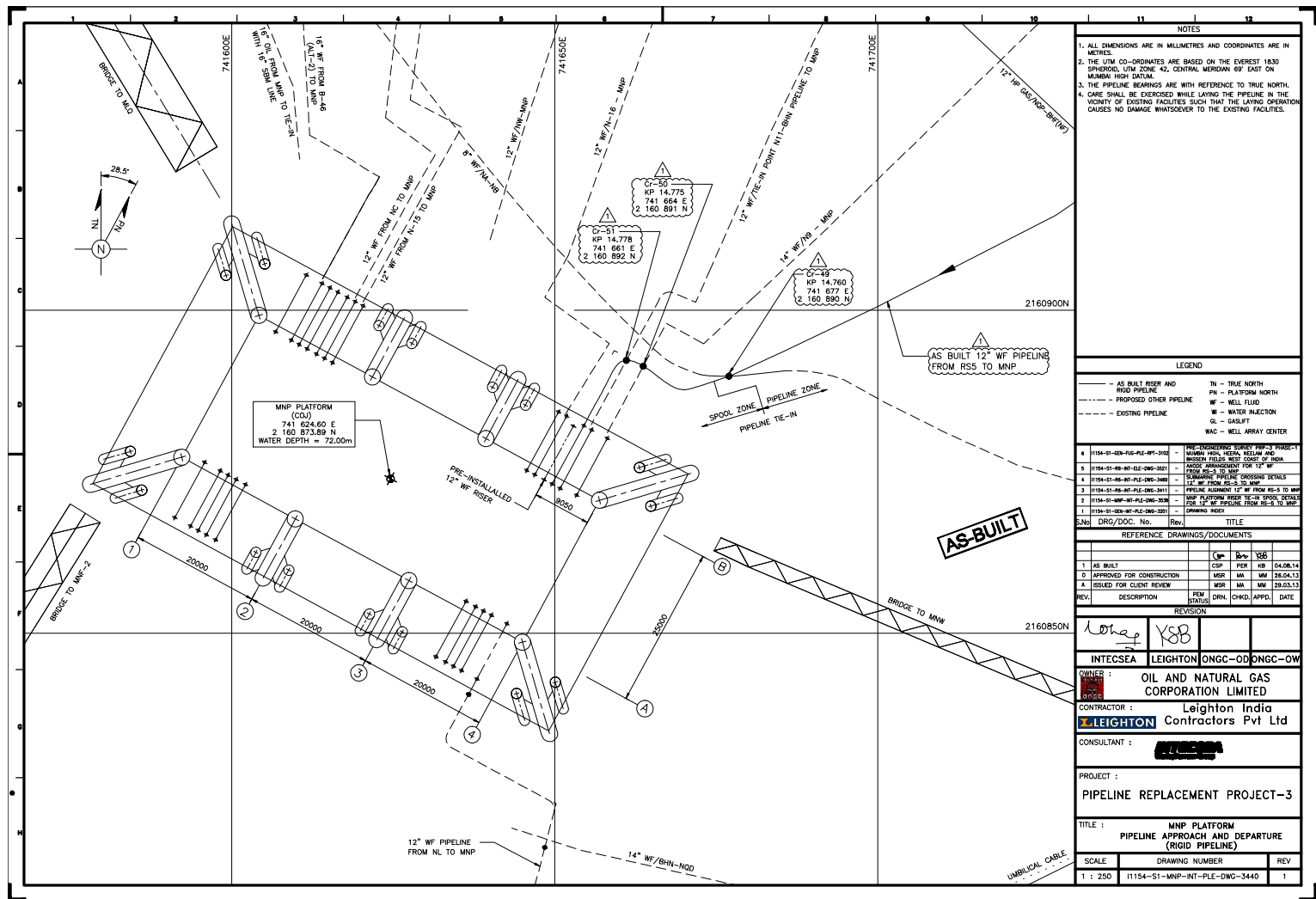
LEGENDS

- Existing Infrastructure
- Proposed Pipeline

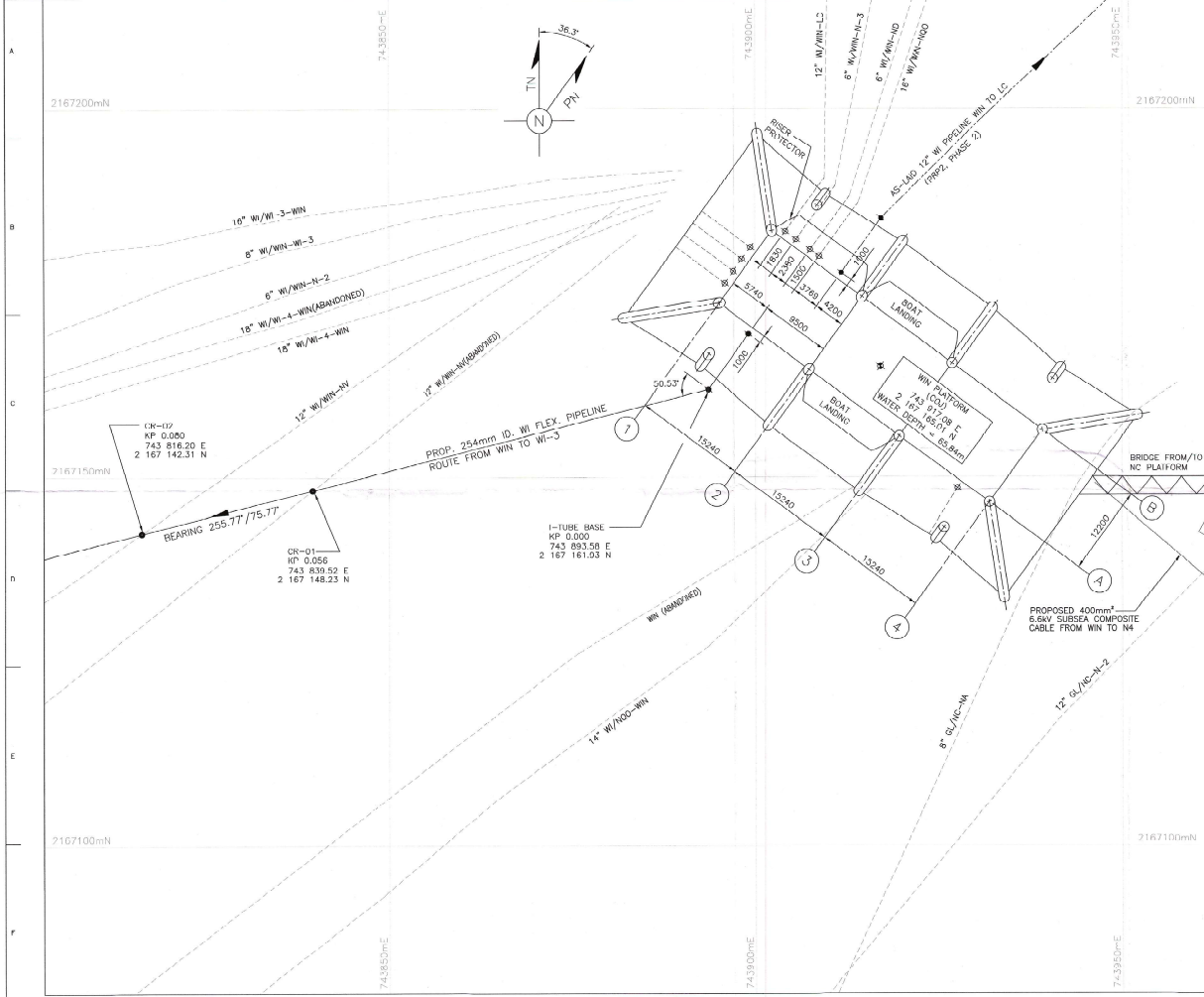


0	16.02.26	ISSUED FOR BID	HN	TWK	SC
REV.NO.	DATE	DESCRIPTION	DRNL	CHD	APPR.
OIL AND NATURAL GAS CORPORATION LTD.					
OIL & GAS ENGINEERING AND PROJECTS					
MUMBAI					
PIPELINE REPLACEMENT PROJECT X (PRP-X)					
TITLE:-					
Daman Field Layout (PRP-X)					
DRG.NO.-			71XX-EPEC-PL-4003		REV.NO. 0





101812-S3-PL-ENG-DWG-30316
DRAWING NUMBER



THIS DRAWING MUST NOT BE USED FOR CONSTRUCTION UNLESS SPECIFICALLY CERTIFIED FOR THAT PURPOSE UNDER AN ISSUE.

NOTES

1. ALL DIMENSIONS ARE IN MILLIMETRES AND COORDINATES ARE IN UTM-1983.
2. ALL COORDINATES ARE BASED ON UNIVERSAL TRANSVERSE MERCATOR PROJECTION ON Everest 1830 SPHEROID, ZONE 42 CENTRAL MERIDIAN 69° EAST ON BOMBAY HIGH DATUM.
3. THE PIPELINE BEARINGS ARE WITH REFERENCE TO TRUE NORTH.
4. THE LOCATION OF THE EXISTING PLATFORMS AND PIPELINES ARE BASED ON THE PRE-ENGINEERING SURVEY DRAWINGS BY FLUORO SURVEY INDIA PVT. LTD.
5. CARE SHALL BE EXERCISED WHILE LAYING THE PIPELINE IN THE VICINITY OF EXISTING FACILITIES SUCH THAT THE LAYING OPERATION CAUSES NO DAMAGE WHATSOEVER TO THE EXISTING FACILITIES.

LEGEND

- PROPOSED 1-TUBE AND FLEXIBLE PIPELINE
- PROPOSED PIPELINE (PHASE 1 AND 2)
- EXISTING PIPELINE
- TRUE NORTH
- PLATFORM NORTH
- WELL FLOW
- WATER INJECTION
- CASSETT
- CENTER OF JACKET

REFERENCE DRAWINGS/DOCUMENTS

S.NO.	DWG./DOC. NO.	REV.	TITLE
1	101812-S3-PL-ENG-DWG-30301	1	DRAWING INDEX
2	101812-S3-PL-ENG-DWG-30302	1	FIELD LAYOUT BOMBAY HIGH FIELD
3	101812-S3-PL-ENG-DWG-30303	1	FLEXIBLE PIPELINE ALIGNMENT 254mm ID. WI FROM WIN TO WI-1
4	101812-S3-PL-ENG-DWG-30304	1	WIN PLATFORM (254mm ID. WI FROM WIN TO WI-1) 21mm OD 1-TUBE ASSEMBLY
5	101812-S3-PL-ENG-DWG-30305	1	SUBSEA PIPELINE CROSSING DETAIL (FLEXIBLE PIPELINE)

REV.	DESCRIPTION	DRN.	CHKD.	APPD.	DATE
0	ISSUED FOR CONSTRUCTION	THANA	NA	SI	2.07.10
1	REVISED FOR CLIENT REVIEW	THANA	NA	SI	3.06.10
2	ISSUED FOR CLIENT REVIEW	THANA	NA	SI	9.02.10

ONGC (OW) ONGC (OD) LEIGHTON INTECSEA

OWNER : OIL & NATURAL GAS CORPORATION LTD.
CHRG. (CONVEY.) MR. MUMBAI

CONSULTANT : INTECSEA

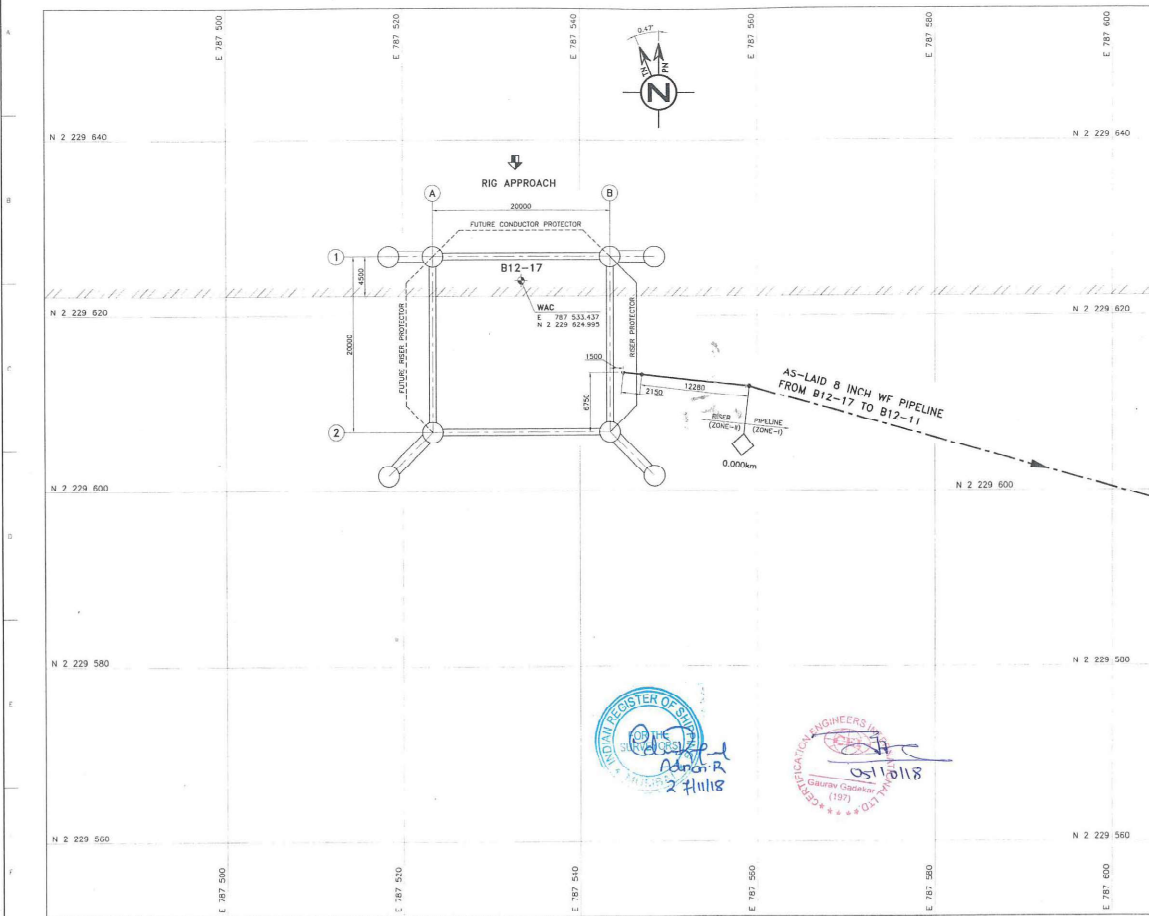
CONTRACTOR : LEIGHTON CONTRACTORS INDIA PVT. LTD.

PROJECT : PIPELINE REPLACEMENT PROJECT-2

TITLE : WIN PLATFORM PIPELINE APPROACH AND DEPARTURE (FLEXIBLE PIPELINE)

SCALE	DRAWING NUMBER	REV.
1 : 250	101812-S3-PL-ENG-DWG-30316	0

C17022-54-1-B1217-4101
DRAWING NUMBER



FILE: C17022-54-1-B1217-4101 | T-50-255-17-1-C17022
NOTES

1. ALL DIMENSIONS ARE IN MILLIMETRES AND CO-ORDINATES ARE IN METRES.
2. THE UTM CO-ORDINATES ARE BASED ON THE Everest 1850 SPHEROID, UTM ZONE 45N, CENTRAL MERIDIAN 85° EAST ON MUMBAI HIGH DATUM.

ACCEPTED BY L&H.E. DC
SIGN: 6
DATE: 17-09-18

- LEGEND**
- AS-BUILT RISER
 - AS-LAID PIPELINE
 - OTHER AS-LAID PIPELINE
 - KILOMETER POST
 - TN TRUE NORTH
 - PN PLATFORM NORTH
 - WAC WELL ARRAY CENTER
 - KM KILOMETER
 - WF WELL FLOW

REFERENCE DRAWINGS/DOCUMENTS

SL. NO.	NO./REV.	REV.	DATE	DESCRIPTION
1	C17022-54-1-000-1000	1	17.09.18	DRAWING INDEX
2	C17022-54-1-000-2000	1	17.09.18	FIELD LAYOUT
3	C17022-54-1-000-3000	1	17.09.18	PIPELINE ALIGNMENT DRAWING - 8 INCH WF FROM B12-17 TO B12-11
4	C17022-54-1-000-4000	1	17.09.18	B12-17 PLATFORM - 8 INCH WF RISER ASSEMBLY DRAWING

AS-BUILT

REV	DESCRIPTION	REV	DATE
1	AS-BUILT	1	17.09.18

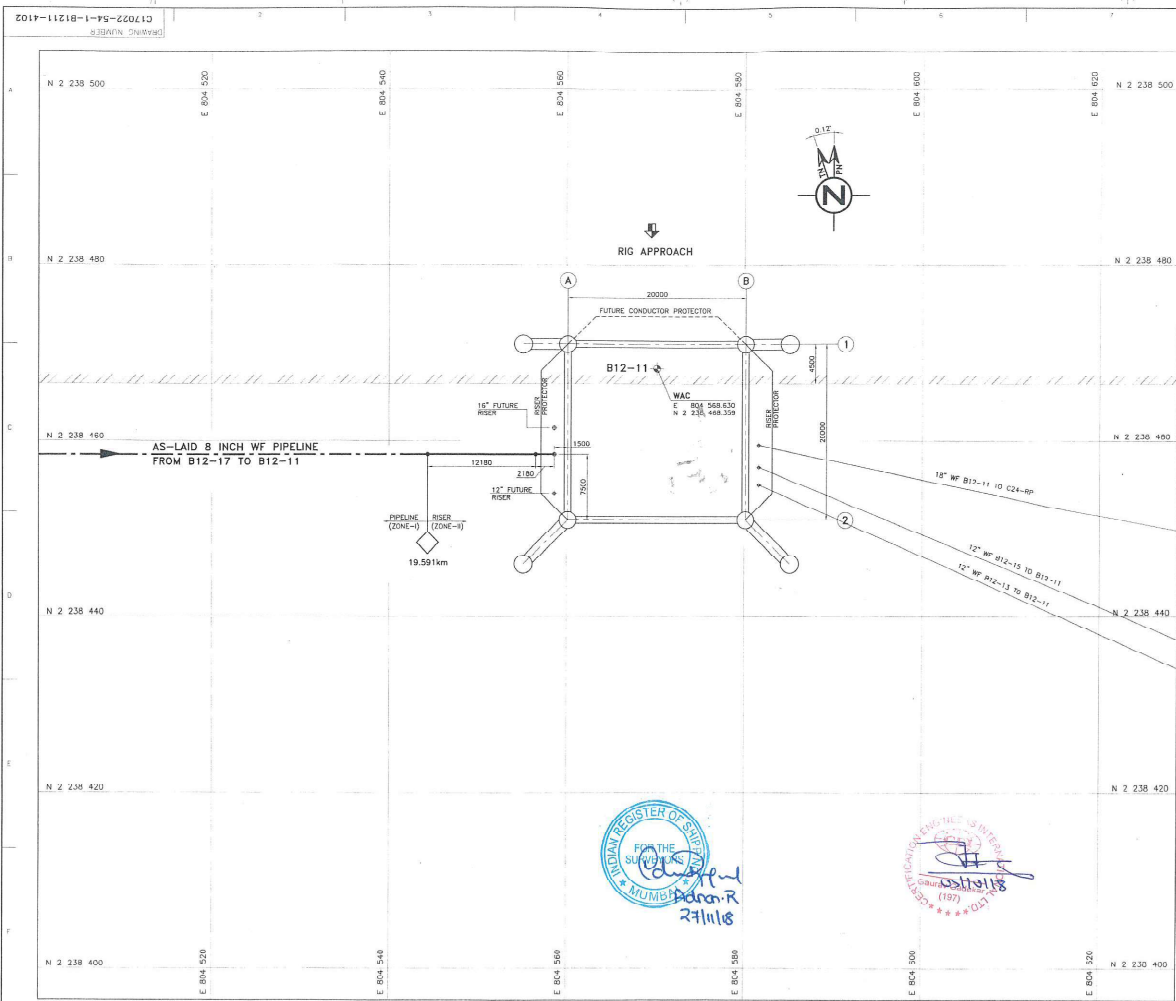
CUSTOMER: OIL & NATURAL GAS CORPORATION LTD. INDIA

EPC CONTRACTOR & ENGG CONSULTANT: L&T HYDROCARBON ENGINEERING

PROJECT: TRANSPORTATION & INSTALLATION - DAMAN DEVELOPMENT PROJECT

TITLE: B12-17 PLATFORM PIPELINE APPROACH AND DEPARTURE DRAWING

SCALE: 1:200 TOTAL NO. OF SHEETS: 1 OF 1
DRAWING NUMBER: C17022-54-1-B1217-4101



FILE: C17022-54-1-B1211-4102 | 1-50-005-170-C17022

NOTES

1. ALL DIMENSIONS ARE IN METRES AND CO-ORDINATES ARE IN METRES.
2. THE UTM CO-ORDINATES ARE BASED ON THE EVEREST 1830 DATUM, UTM ZONE 42N, CENTRAL MERIDIAN BP EAST ON MUMBAI HIGH DATUM.

APPROVED BY: *[Signature]*
DATE: 17-09-18

LEGEND

- AS-BUILT RISER
- AS-LAID PIPELINE
- OTHER AS-LAID PIPELINE
- KILOMETER POST
- TN TRUE NORTH
- PN PLATFORM NORTH
- WAC WELL ABBY CENTER
- WKM KILOMETER
- WF WELL FLUID

REFERENCE DRAWINGS/DOCUMENTS

NO.	DESC/DOC. NO.	REV	FILE
1	C17022-54-1-000-1000	1	DRAWING INDEX
2	C17022-54-1-000-1000	1	FIELD LAYOUT
3	C17022-54-1-000-1000	1	PIPELINE APPROACH AND DEPARTURE - 8 INCH WF FROM B12-17 TO B12-11
4	C17022-54-1-B1211-3000	1	B12-11 PLATFORM - 8 INCH WF RISER ASSEMBLY DRAWING

AS-BUILT

NO.	REV	DATE	BY	CHKD	APPD
1	AS-BUILT	17.09.18			
2	ISSUED FOR APPROVAL	01.02.18			

CLIENT

ONGC OIL & NATURAL GAS CORPORATION LTD. INDIA

EPC CONTRACTOR & ENGG CONSULTANT

L&I HYDROCARBON ENGINEERING

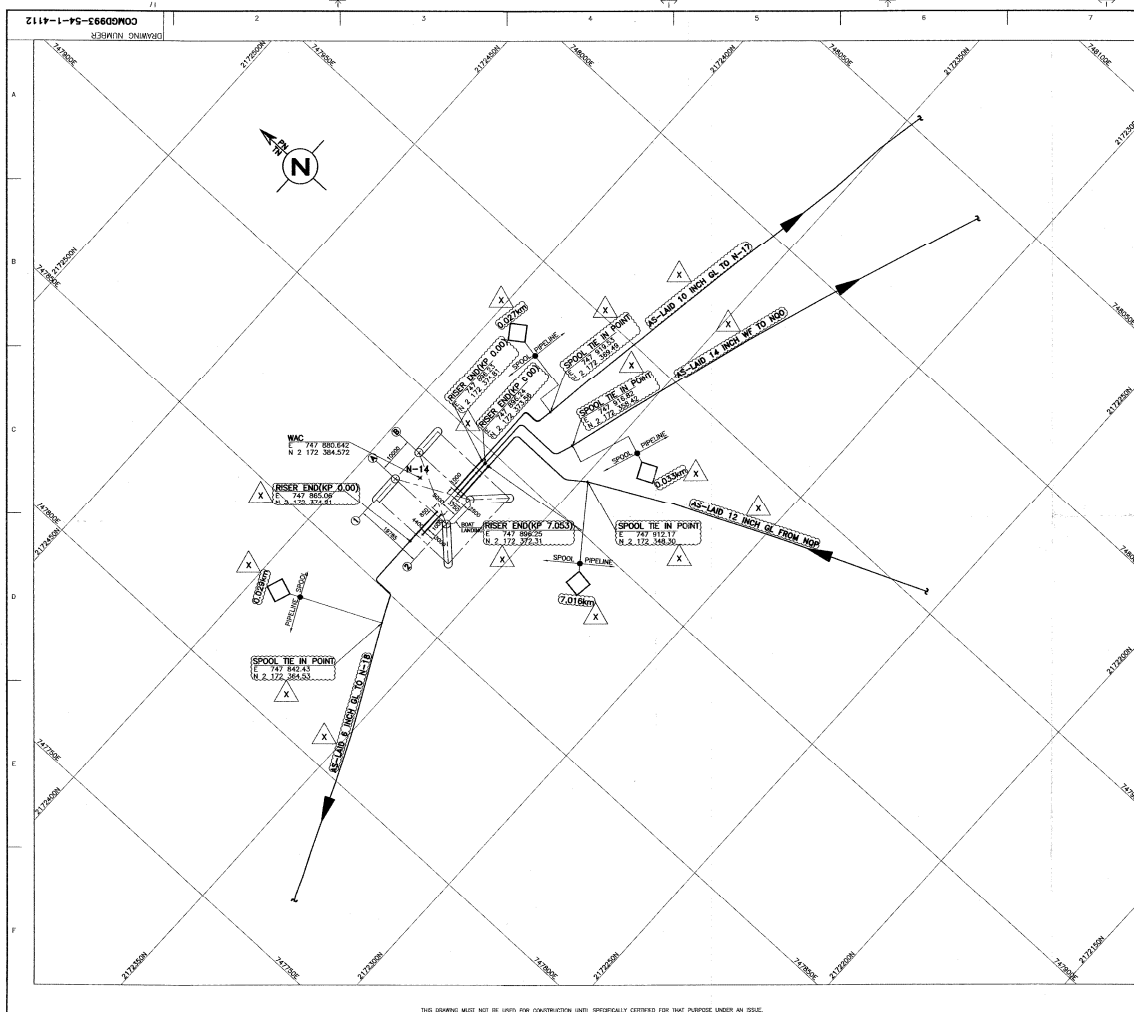
PROJECT: TRANSPORTATION & INSTALLATION - DAMAN DEVELOPMENT PROJECT

FILE: B12-11 PLATFORM PIPELINE APPROACH AND DEPARTURE DRAWING

SCALE: 1:200 TOTAL NO. OF SHEETS: 1 OF 1

DRAWING NUMBER: C17022-54-1-B1211-4102





FILE: 4112-N14 LTV-5042-1/0

NOTES

1. ALL DIMENSIONS ARE IN METERS AND CO-ORDINATES ARE IN METERS.
2. THE EXISTING PIPELINE DIA SHOWN ARE IN INCHES.
3. ALL CO-ORDINATES ARE BASED ON UNIVERSAL TRANSVERSE MERCATOR PROJECTION, ON EPOCH 1950 SPHEROID, ZONE 42 CENTRE MERIDIAN 89 EAST ON MUMBAI HIGH DATUM.
4. DELETED
5. DELETED
6. DELETED
7. DELETED
8. DELETED

AS-BUILT

LEGEND

AS-BUILT REEL
AS-BUILT APPROX. LINE
X
Kilometer Post
WAC Well Array Center
EL Elevation
GL Gas Lift
WF Well Fluid
NMI Kilometer
M Meter
TYP Typical
TN True North
PN Platform North
W.P. Airport Wharfedale Point

REFERENCE DRAWINGS/DOCUMENTS

S.No.	DRG/DOC. No.	Rev.	TITLE
1	COMG0993-54-1-1000	1	DRAWING INDEX
2	COMG0993-54-0-2001	1	FIELD LAYOUT
3	COMG0993-54-0-4001	1	PIPELINE ALIGNMENT DRAWING - 14 INCH WF FROM N-14 TO N-17 (SHEET 1 OF 3)
4	COMG0993-54-0-4006	1	PIPELINE ALIGNMENT DRAWING - 12 INCH GL FROM N-14 TO N-17 (SHEET 1 OF 3)
5	COMG0993-54-0-4007	1	PIPELINE ALIGNMENT DRAWING - 8 INCH CL FROM N-14 TO N-17 (SHEET 1 OF 3)
6	COMG0993-54-0-4008	1	PIPELINE ALIGNMENT DRAWING - 10 INCH CL FROM N-14 TO N-17 (SHEET 1 OF 3)

VERIFIED BY LTV DC
SIGN: [Signature]
DATE: 2-6-14

IRINA Services

REV	DESCRIPTION	DRN	CHD	APPD	PM	DATE
0	AS-BUILT	BRN	OK	PVG	MS	28.05.14
0	APPROVED FOR CONSTRUCTION	MS	OK	PVG	MS	28.01.15
01	ISSUED FOR CLIENT'S COMMENTS	MS	OK	PVG	MS	22.12.10

LTV SWIBER ONGC-OD ONGC-OW

OIL & NATURAL GAS CORPORATION LTD. INDIA

Swiber OFFSHORE CONSTRUCTION PTE LTD. SINGAPORE

VALDE
L&T-Valdel Engineering Limited
16, Pithampur Road, Bhopal-462 020
INDIA

PROJECT: MIND-11 PIPELINES AND MODIFICATION PROJECT

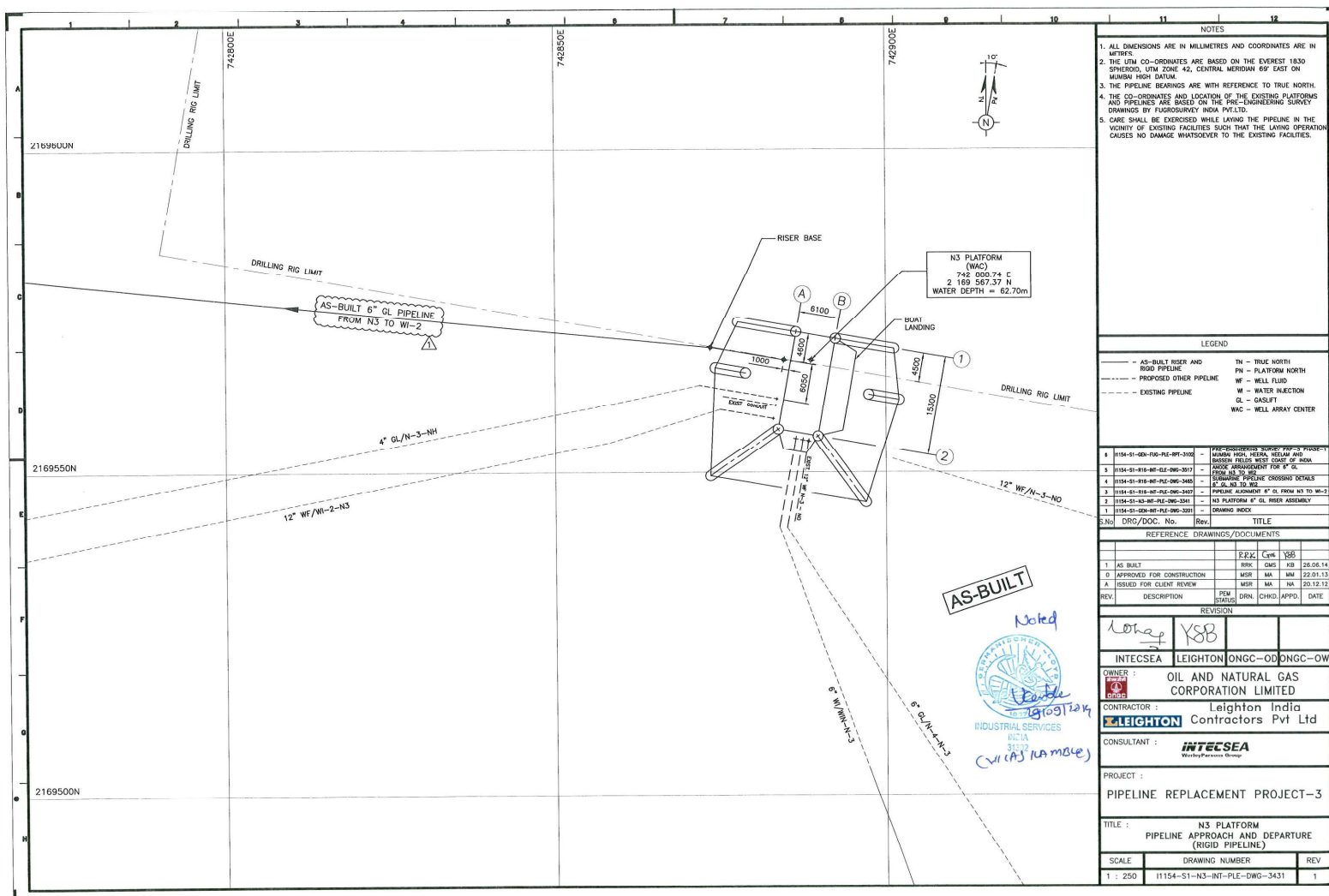
TITLE: N-14 PLATFORM

PIPELINE APPROACH AND DEPARTURE DRAWING

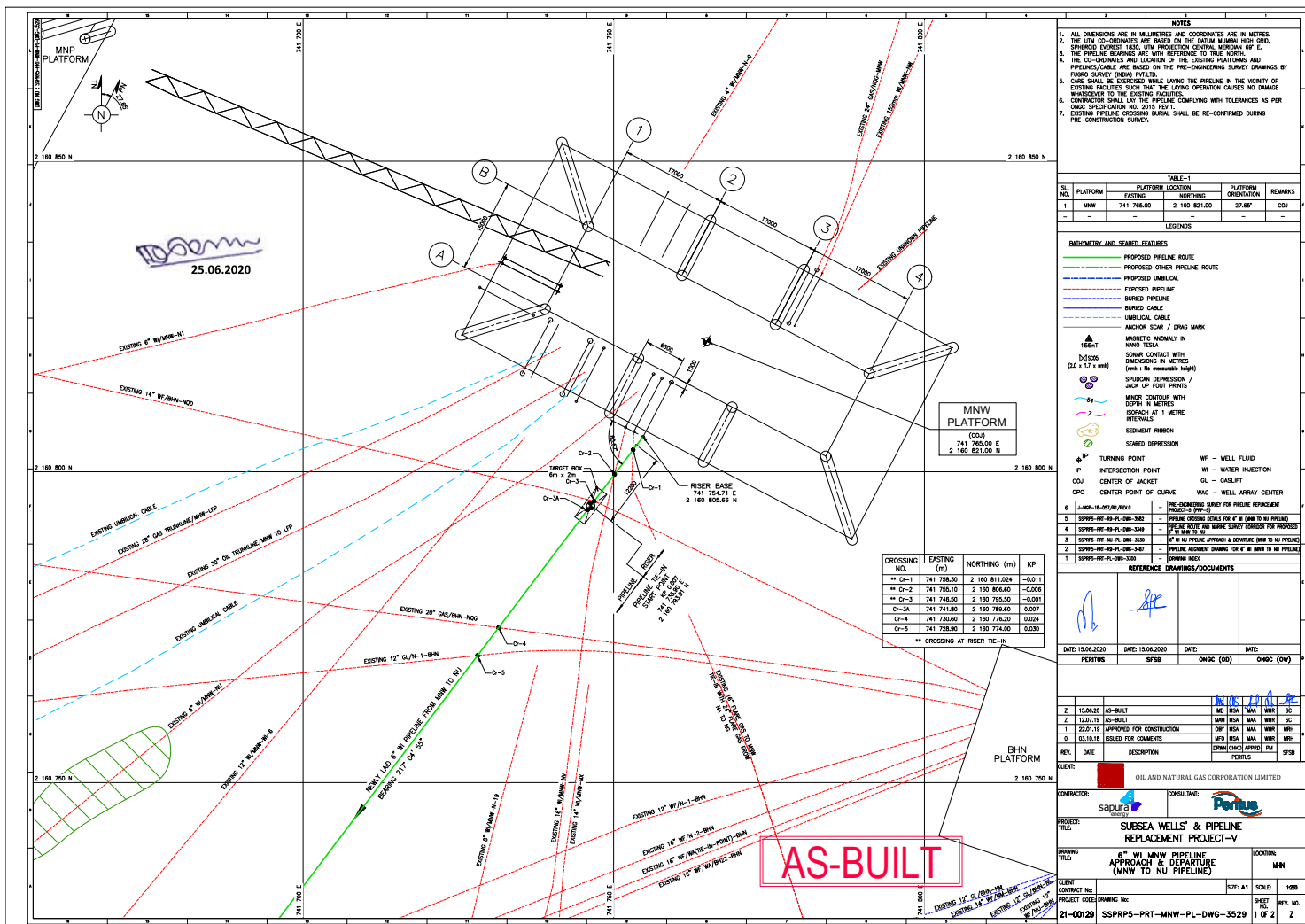
SCALE: 1:500

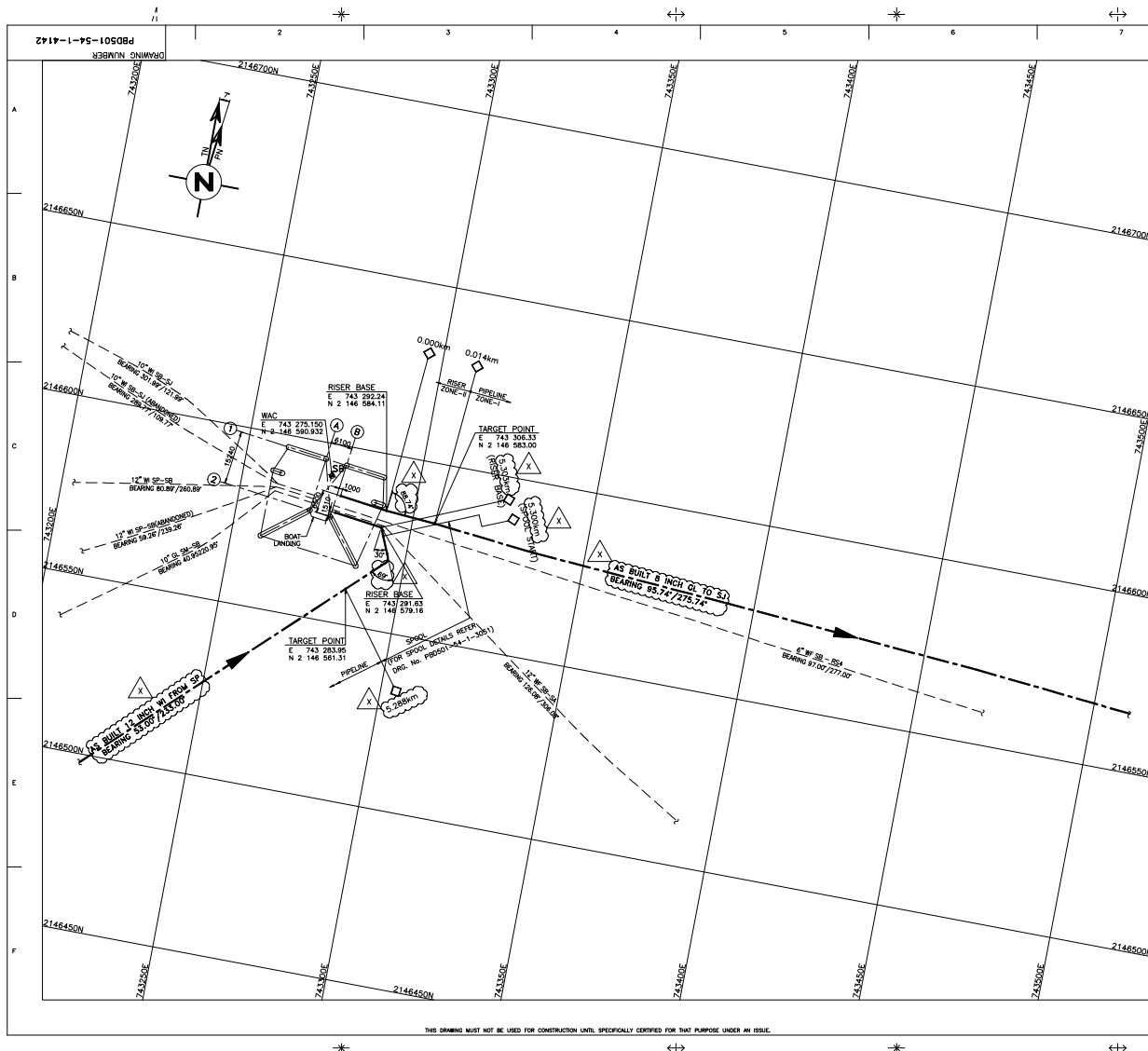
DRAWING NUMBER: C11000-10-P1-4112

REV: X



NOTES	
1. ALL DIMENSIONS ARE IN MILLIMETRES AND COORDINATES ARE IN METRES.	
2. THE UTM CO-ORDINATES ARE BASED ON THE EVEREST 1830 SPHEROID, UTM ZONE 42, CENTRAL MERIDIAN 85° EAST ON MUMBAI HIGH DATUM.	
3. THE PIPELINE BEARINGS ARE WITH REFERENCE TO TRUE NORTH.	
4. THE CO-ORDINATES AND LOCATION OF THE EXISTING PLATFORMS AND PIPELINES ARE BASED ON THE PRE-ENGINEERING SURVEY DRAWINGS BY FUSROSSURVEY INDIA PVT.LTD.	
5. CARE SHALL BE EXERCISED WHILE LAYING THE PIPELINE IN THE VICINITY OF EXISTING FACILITIES SUCH THAT THE LAYING OPERATION CAUSES NO DAMAGE WHATSOEVER TO THE EXISTING FACILITIES.	
LEGEND	
— AS-BUILT RIGID AND RIGID PIPELINE	— TRUE NORTH
--- PROPOSED OTHER PIPELINE	— PLATFORM NORTH
--- EXISTING PIPELINE	— WELL FLUID
	— WATER INJECTION
	— GASLIFT
	— WELL ARRAY CENTER
S.No. DRG/DOC. No. Rev. TITLE	
REFERENCE DRAWINGS/DOCUMENTS	
1	AS BUILT
2	APPROVED FOR CONSTRUCTION
3	ISSUED FOR CLIENT REVIEW
REV	DESCRIPTION
REVISION	
1	AS BUILT
2	APPROVED FOR CONSTRUCTION
3	ISSUED FOR CLIENT REVIEW
REV	DESCRIPTION
OWNER : OIL AND NATURAL GAS CORPORATION LIMITED	
CONTRACTOR : Leighton India Contractors Pvt Ltd	
CONSULTANT : INTECSEA	
PROJECT : PIPELINE REPLACEMENT PROJECT-3	
TITLE : N3 PLATFORM PIPELINE APPROACH AND DEPARTURE (RIGID PIPELINE)	
SCALE	DRAWING NUMBER
1 : 250	11154-S1-N3-INT-PLD-DWG-3431
REV	1





NOTES	
1.	ALL DIMENSIONS ARE IN MILLIMETRES AND CO-ORDINATES ARE IN METRES.
2.	THE PIPELINE DIA SHOWN ARE IN INCHES.
3.	ALL CO-ORDINATES ARE BASED ON UNIVERSAL TRANSVERSE MERCATOR PROJECTION, ON EVEREST 1830 SPHEROID, ZONE 42 CENTRAL MERIDIAN 69° EAST ON BOMBAY HIGH DATUM.
4.	THE PIPELINE BEARINGS ARE WITH REFERENCE TO TRUE NORTH.
5.	
6.	DELETED.
7.	
8.	ALL DIMENSIONS ARE AT JACKET WORKING POINT.

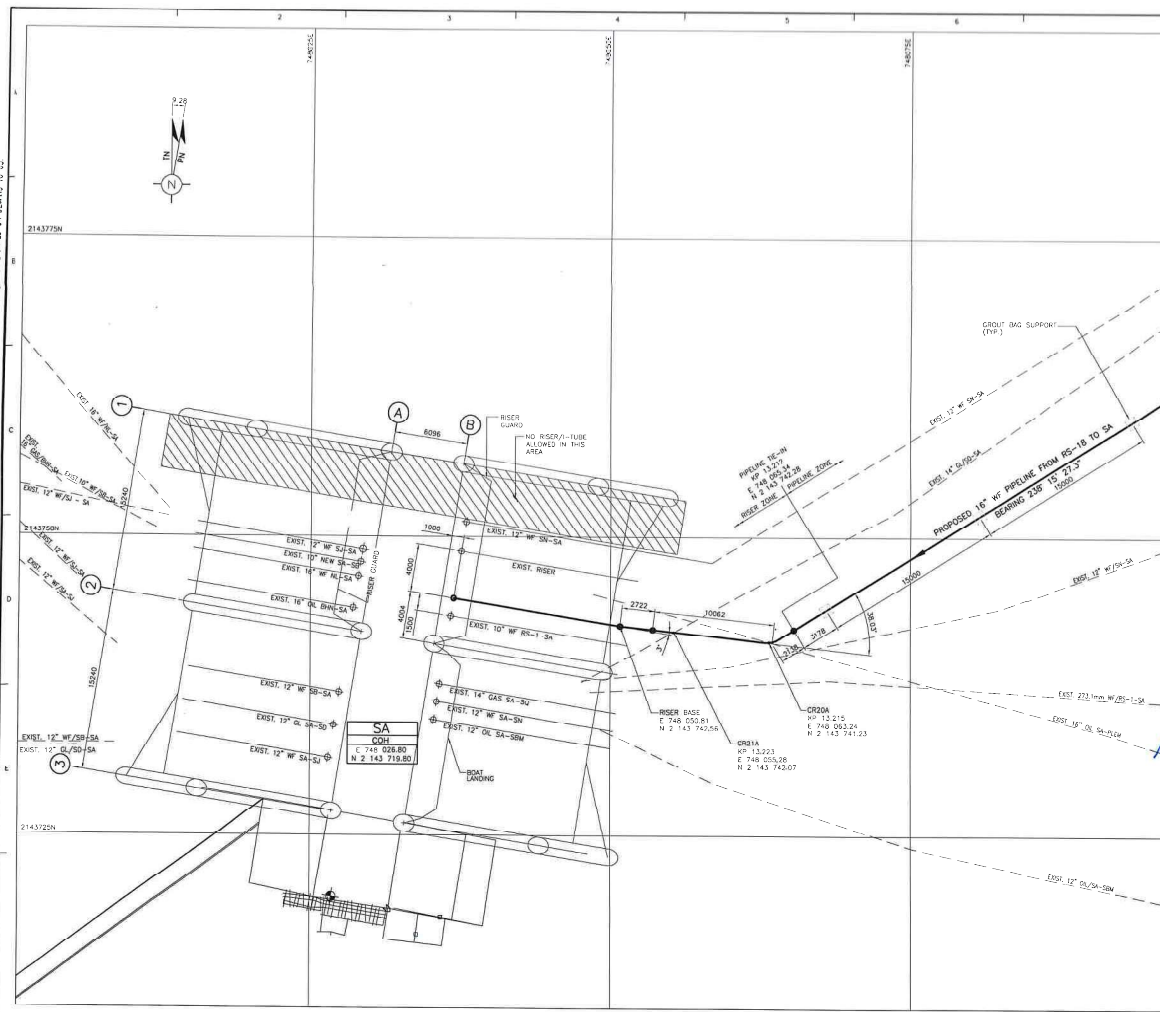
AS-BUILT	
LEGEND	
	AS BUILT RISER
	AS BUILT PIPELINE
	EXISTING LINE / RISER
	KILOMETRE POST
WAC	WELL ARRAY CENTER
EL	ELEVATION
GL	GAS LIFT
W	WATER INJECTION
M	KILOMETRE
M	METRE
TYP	TYPICAL
TN	TRUE NORTH
PN	PLATFORM NORTH
W.P.	JACKET WORKING POINT

REFERENCE DRAWINGS/DOCUMENTS			
S.No	DRG./DOC. No.	Rev. No.	TITLE
1	PD0501-54-1-1001	-	DRAWING INDEX (2 SHEETS)
2	PD0501-54-0-2004	-	FIELD LAYOUT BOMBAY HIGH FIELD (2 SHEETS)
3	PD0501-54-1-3051	-	SB PLATFORM - 12 INCH W/ RISER ASSEMBLY DRAWING
4	PD0501-54-1-3052	-	SB PLATFORM - 8 INCH GL RISER ASSEMBLY DRAWING
5	PD0501-54-0-4121	-	PIPELINE ALIGNMENT DRAWING-12 INCH W/ FROM SP TO SB (2 SHEETS)
6	PD0501-54-0-4122	-	PIPELINE ALIGNMENT DRAWING-8 INCH GL FROM SB TO SJ (3 SHEETS)

X	AS BUILT	AV	SW	PVG	08.08.07
O	APPROVED FOR CONSTRUCTION	SVV	PVG	SB	22.02.06
C2	RE-ISSUED FOR CLIENT'S COMMENTS	SVV	PVG	SB	11.01.06
C1	ISSUED FOR CLIENT'S COMMENTS	SVV	PVG	SB	02.01.06
REV.	DESCRIPTION	DRN	CHNG.	APPD.	DATE

ONGC (OW)	ONGC (OD)	L & T	L&T-VALDEL
OIL & NATURAL GAS CORPORATION LTD. OFFSHORE WORKS DIVISION MUMBAI REGION			
CONTRACTOR : CONSORTIUM OF LARSEN & TOUBRO LIMITED AND GLOBAL INDUSTRIES OFFSHORE L.L.C.			
LARSEN & TOUBRO LIMITED OCS, MUMBAI			
GLOBAL INDUSTRIES OFFSHORE L.L.C. 19, Pirodda Road, Cochin-682 025			
TITLE : PIPELINE REPLACEMENT PROJECT SB PLATFORM PIPELINE APPROACH AND DEPARTURE DRAWING			
SCALE	DRAWING NUMBER	REV	
1:500	PD0501-54-1-4142	X	

THIS DRAWING MUST NOT BE USED FOR THE PURPOSE OF MANUFACTURING ANY ARTICLE SHOWN IN THE DRAWING WITHOUT THE WRITTEN PERMISSION OF THE ENGINEER. ANY SUCH USE SHALL BE AT THE USER'S RISK.



- NOTES**
1. ALL DIMENSIONS ARE IN METRES AND COORDINATES ARE IN UTM.
 2. GRID SYSTEM IS IN UTM (EASTING 470000, NORTH 2143725).
 3. THE PIPELINE BEARINGS ARE CLOCKWISE WITH REFERENCE TO TRUE NORTH.
 4. THE COORDINATES AND LOCATION OF THE EXISTING PLATFORM AND TENDERS ARE BASED ON THE PRE-ENGINEERING SURVEY DATES OF 1998 AND 1999.
 5. LAKE SHALL BE EXISTING WHILE LAYING THE PIPELINE IN THE VICINITY OF EXISTING FACILITIES. THE LAKE SHALL BE EXISTING AND NO DRAINAGE WORKS SHALL BE DONE TO THE EXISTING FACILITIES.
 6. THE PIPELINE APPROACH AREA SHALL BE RESERVED SOLELY FOR THIS PIPELINE UNTIL THE PIPELINE AND RISER IS COMPLETED.

- LEGENDS**
- PROPOSED PIPELINE FOR PHASE-III PROJECT
 - EXISTING PIPELINE FOR PHASE-III PROJECT
 - EXISTING PIPELINE
 - EXISTING BAG SUPPORT / MATRESS
 - TR - TRUE NORTH
 - PN - PLATFORM NORTH
 - WT - WELL FULCRUM
 - WM - WATER MENTION
 - CL - CASSETT
 - COH - CENTRE OF HEBER

HOLDS

REFERENCE DRAWINGS/DOCUMENTS

NO.	DESCRIPTION
1	12\"/>
2	12\"/>
3	12\"/>
4	12\"/>
5	12\"/>

APPROVED FOR CONSTRUCTION (AFC)

DATE: 12/01/2010

BY: [Signature]

REVISIONS

NO.	DESCRIPTION	DATE	BY	CHKD
1	ISSUED FOR CONSTRUCTION	12/01/2010	[Signature]	[Signature]

PROJECT INFORMATION

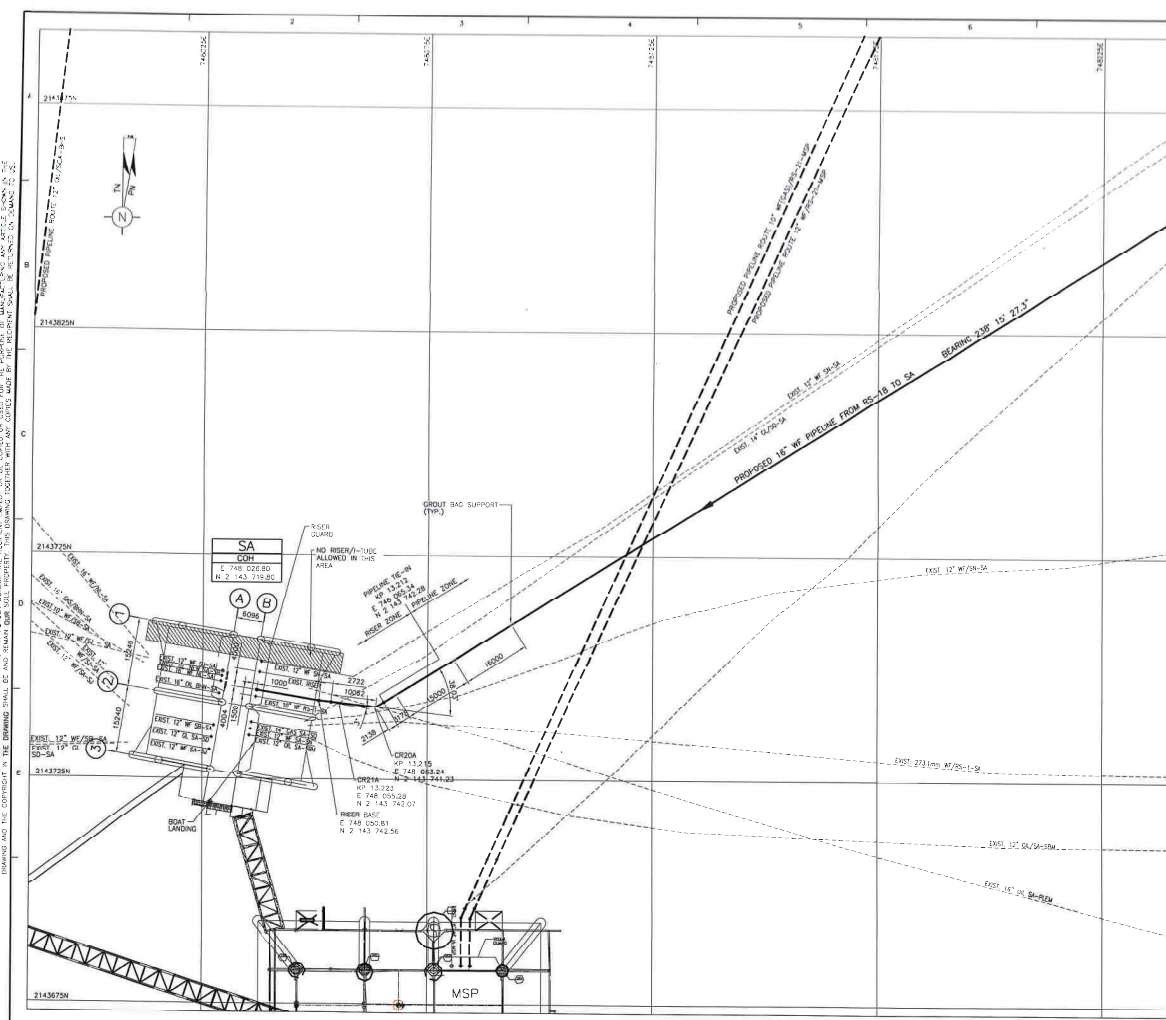
PROJECT: MUMBAI HIGH SOUTH REDEVELOPMENT PHASE-III PROJECT (MHSRD-III)

FILE: 16\"/>

DATE: 12/01/2010

BY: [Signature]

THIS DRAWING IS NOT TO BE USED FOR ANY PURPOSE OUTSIDE THE PROJECT AND IS NOT TO BE USED FOR ANY PURPOSE OUTSIDE THE PROJECT AND IS NOT TO BE USED FOR ANY PURPOSE OUTSIDE THE PROJECT.



- NOTES**
1. ALL DIMENSIONS ARE IN METRES AND COORDINATES ARE IN METRES.
 2. GRID SYSTEM IS IN 1980 EXISTING SHIPBOARD UTM ZONE 42 FM (SEE UTM SHIPBOARD DATA).
 3. THE PIPELINE BEARINGS ARE CLOCKWISE WITH REFERENCE TO TRUE NORTH.
 4. THE COORDINATES AND LOCATION OF THE EXISTING PLATFORMS AND PIPELINES ARE BASED ON THE PHOTO-ENGINEERING SURVEY CONDUCTED BY SUGAT SURVEY INDIA PVT. LTD.
 5. CARE SHALL BE EXERCISED WHILE LAYING THE PIPELINE IN THE VICINITY OF EXISTING FACILITIES, SUCH THAT THE LAYING OPERATION CAUSES NO DAMAGE WHATSOEVER TO THE EXISTING FACILITIES.
 6. THE PIPELINE APPROACH AREA SHALL BE RESERVED SOLELY FOR THIS PIPELINE UNTIL THE 16\"/>

- LEGENDS**
- PROPOSED PIPELINE FOR M/SRD PHASE-II PROJECT
 - OTHER PROPOSED PIPELINE FOR M/SRD PHASE-II PROJECT
 - EXISTING PIPELINE
 - CRUISE BAG SUPPORT / MATINGS
 - DN - TRUE NORTH
 - PN - PLATFORM NORTH
 - WF - WELL FLOW
 - W - WATER INJECTION
 - GL - GAS LIFT
 - CH - CENTRE OF HELICOPTER

HOLDS

DATE	BY	CHKD	APPD
15/04/2011	1	2	3

REFERENCE DRAWINGS/DOCUMENTS



NO.	DESCRIPTION
1	16\"/>

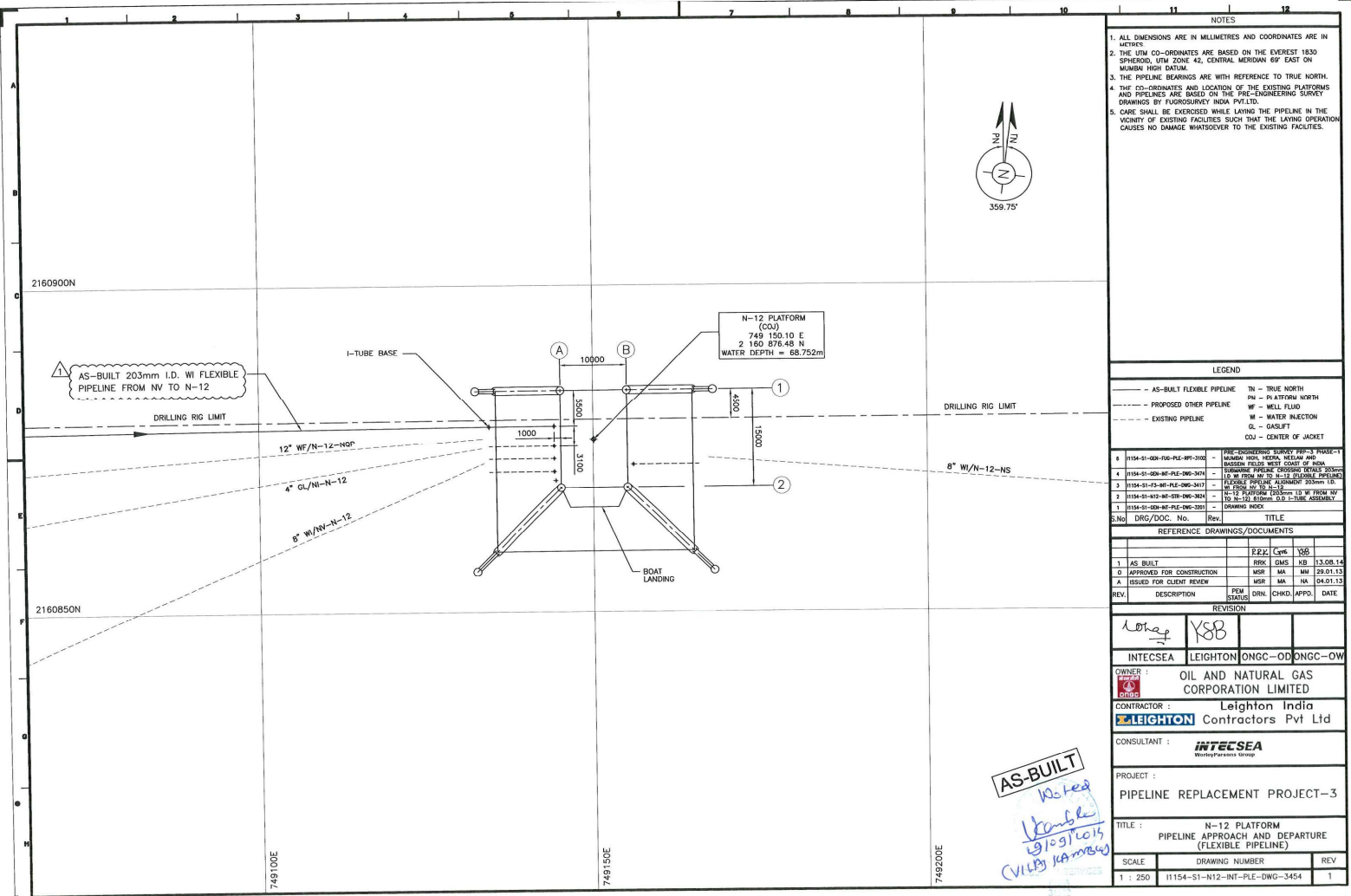
NO.	DESCRIPTION	DATE	BY	CHKD	APPD
1	APPROVED FOR CONSTRUCTION (M/SRD)	15/04/2011	1	2	3
2	APPROVED FOR APPROVAL (M/SRD)	15/04/2011	1	2	3
3	APPROVED FOR CONSTRUCTION (M/SRD)	15/04/2011	1	2	3

Oil and Natural Gas Corporation Ltd. INDIA

MUMBAI HIGH SOUTH REDEVELOPMENT PHASE-II PROJECT (MHSRD-II)

16\"/>

 MAHARASHTRA SAHAKARI SANGATHAN LTD. महाराष्ट्र सहकारी संगठन लि. महाराष्ट्र सहकारी संस्थान लि.		COURTESY  AkerSolutions WITH EXPERTISE MAJOR IN	
PROJECT MUMBAI HIGH SOUTH REDEVELOPMENT PHASE-III PROJECT (MHSD-III)			
TITLE 12" OIL BHS PLATFORM PIPELINE APPROACH & DEPARTURE (SCA TO BHS OIL PIPELINE)			
LOCATION	BHS	DOCUMENT TYPE	DWG
CD FILENAME	BHS-DRG-PLE-0000-02.dwg		SCALE
DRAWING NO.	BHS-DRG-PLE-0006		SHEET NO. 2 OF 2



NOTES

1. ALL DIMENSIONS ARE IN MILLIMETRES AND COORDINATES ARE IN METRES.
2. THE UTM CO-ORDINATES ARE BASED ON THE EVEREST 1830 SPHEROID, UTM ZONE 43, CENTRAL MERIDIAN 86° EAST ON MUMBAI HIGH DATUM.
3. THE PIPELINE BEARINGS ARE WITH REFERENCE TO TRUE NORTH.
4. THE CO-ORDINATES AND LOCATION OF THE EXISTING PLATFORMS AND PIPELINES ARE BASED ON THE PRE-ENGINEERING SURVEY DRAWINGS BY FUSION SURVEY INDIA PVT.LTD.
5. CARE SHALL BE EXERCISED WHILE LAYING THE PIPELINE IN THE VICINITY OF EXISTING FACILITIES SUCH THAT THE LAYING OPERATION CAUSES NO DAMAGE WHATSOEVER TO THE EXISTING FACILITIES.

LEGEND

---	AS-BUILT FLEXIBLE PIPELINE	TN - TRUE NORTH
---	PROPOSED OTHER PIPELINE	PN - PLATITUDE NORTH
---	EXISTING PIPELINE	WF - WELL FLUID
---		WI - WATER INJECTION
---		GL - GASLIFT
---		COJ - CENTER OF JACKET

REFERENCE DRAWINGS/DOCUMENTS

REV.	DESCRIPTION	REV.	DATE
1	AS-BUILT		
0	APPROVED FOR CONSTRUCTION		
A	ISSUED FOR CLIENT REVIEW		

REVISION

REV.	DESCRIPTION	REV.	DATE
1	AS-BUILT		
0	APPROVED FOR CONSTRUCTION		
A	ISSUED FOR CLIENT REVIEW		

OWNER : OIL AND NATURAL GAS CORPORATION LIMITED

CONTRACTOR : Leighton India Contractors Pvt Ltd

CONSULTANT : INTECSEA

PROJECT : PIPELINE REPLACEMENT PROJECT-3

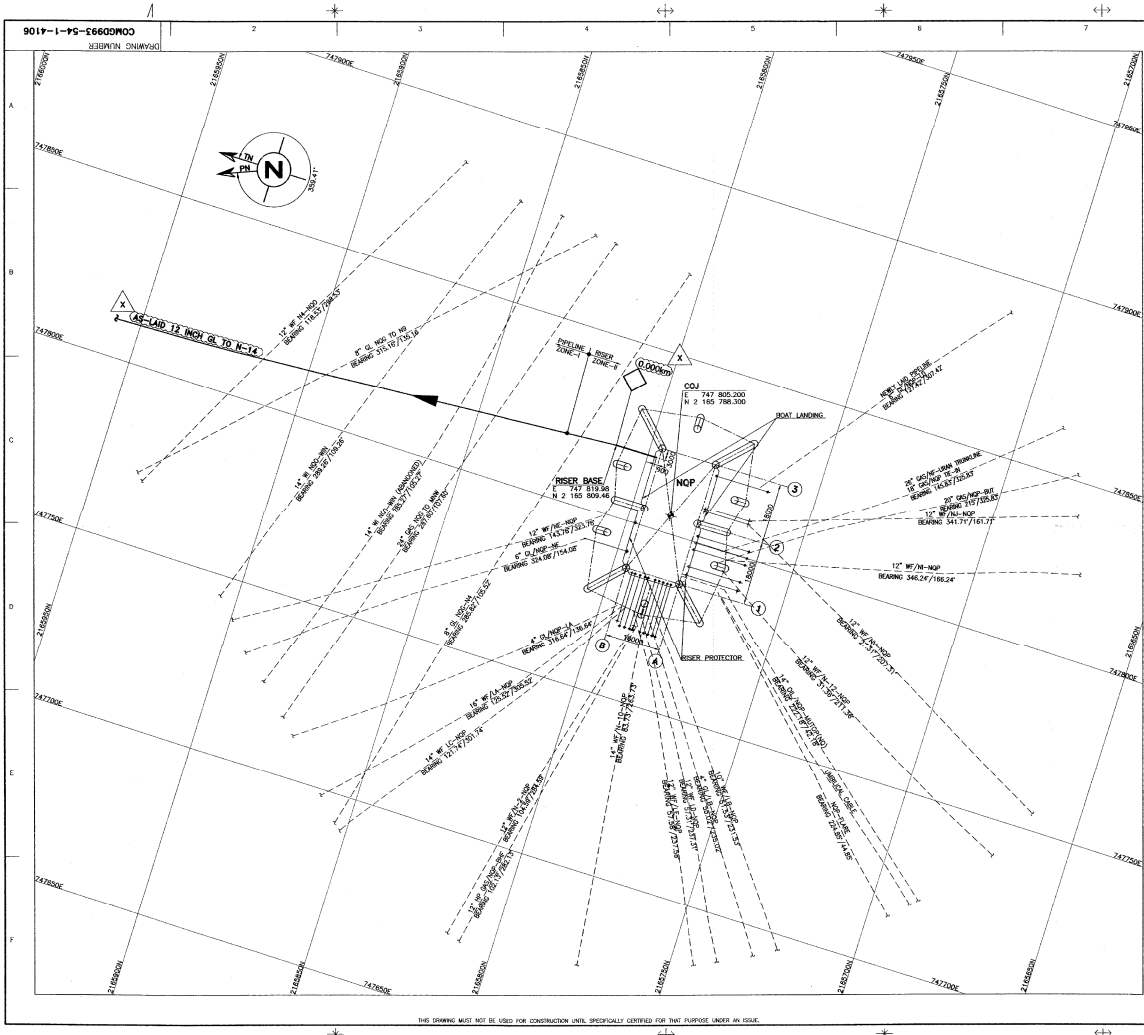
TITLE : N-12 PLATFORM PIPELINE APPROACH AND DEPARTURE (FLEXIBLE PIPELINE)

SCALE : 1 : 250

DRAWING NUMBER : 11154-S1-N12-INT-PLE-DWG-3454

REV : 1

AS-BUILT
10/09/2015
Vijay K. Arora



FILE: 4106-NQP (LTV-5042-1/0)

NOTES

1. ALL DIMENSIONS ARE IN MILLIMETRES AND CO-ORDINATES ARE IN METRES.
2. THE EXISTING PIPELINE ON SHOWN ARE IN INCHES.
3. ALL CO-ORDINATES ARE BASED ON UNIVERSAL TRANSVERSE MERCATOR PROJECTION ON EVEREST 1830 SPHEROID, ZONE 42 CENTRAL MERIDIAN 69° EAST ON MUMBAI HIGH DATUM.
4. DELETED
5. DELETED
6. DELETED
7. DELETED
8. DELETED

AS-BUILT

LEGEND

- AS-BUILT RISER
- AS-BUILT PIPELINE
- EXISTING LINE
- EXISTING RISER
- KILOMETER POST
- CENTRE OF JACKET
- ELEVATION
- GAS LIFT
- KILOMETER
- METER
- TYP
- TRUE NORTH
- PN
- JACKET WORKING POINT

REFERENCE DRAWINGS/DOCUMENTS

Sl. No.	DRG/DOC. No.	Rev.	TITLE
1	CONGD993-54-1-1000		DRAWING INDEX
2	CONGD993-54-0-2001		FIELD LAYOUT
3	CONGD993-54-1-3007		NQP PLATFORM
4	CONGD993-54-0-4005		PIPELINE ALIGNMENT DRAWING 12 INCH G. FROM NQP TO R14 (SHEET 1 OF 4)

VERIFIED BY LTV DC
SIGN: [Signature]
DATE: 2-8-14

RINA Services

Rev.	By	Check	Date
1	BRN/KSN/TM/PVG		29.05.14
2	MS/KSN/TM/PVG		28.01.15
3	RS/KSN/TM/PVG		26.12.10

LTV SWIBER ONGC-OD ONGC-OW

OIL & NATURAL GAS CORPORATION LTD. INDIA

Swiber SWIBER OFFSHORE CONSTRUCTION PTE LTD. SINGAPORE

VALDE
LAT-VALDE Engineering Limited
19, Riverside Road, Singapore 099 220

PROJECT: MINGO-II PIPELINES AND MODIFICATION PROJECT

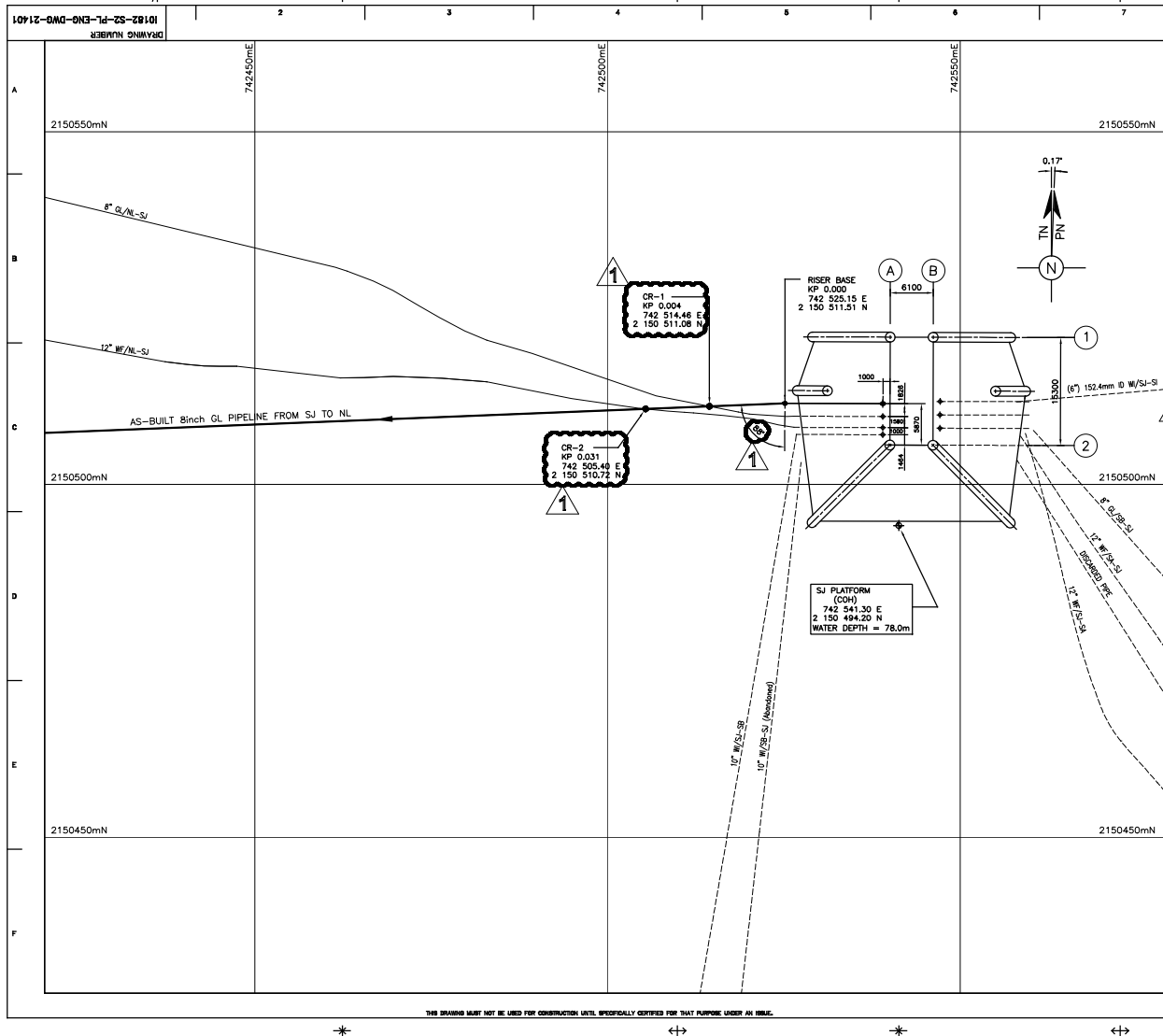
TITLE: NQP PLATFORM PIPELINE APPROACH AND DEPARTURE DRAWING

SCALE: SWIBER REF. No. C11000-10-PL-1-4106

DRAWING NUMBER: 1.500 CONGD993-54-1-4106

REV. X

THIS DRAWING MUST NOT BE USED FOR CONSTRUCTION UNLESS SPECIFICALLY CERTIFIED FOR THAT PURPOSE UNDER AN ISSUE.



NOTES

1. ALL DIMENSIONS ARE IN MILLIMETRES AND COORDINATES ARE IN METRES.
2. ALL COORDINATES ARE BASED ON UNIVERSAL TRANSVERSE MERCATOR PROJECTION ON EVEREST 1830 SPHEROID, ZONE 42 CENTRAL MERIDIAN 60° EAST ON BOMBAY HIGH DATUM.
3. THE PIPELINE BEARINGS ARE WITH REFERENCE TO TRUE NORTH.
4. THE LOCATION OF THE EXISTING PLATFORMS AND PIPELINES ARE BASED ON THE PRE-ENGINEERING SURVEY DRAWINGS BY FUGRO SURVEY INDIA PVT.LTD.

AS-BUILT

LEGEND

- | | |
|---|--|
| <ul style="list-style-type: none"> - AS-BUILT RISER AND RIGID PIPELINE - AS-BUILT I-TUBE AND FLEX PIPELINE - EXISTING PIPELINE | <ul style="list-style-type: none"> TN - TRUE NORTH PN - PLATFORM NORTH WF - WELL FLUID WI - WATER INJECTION GL - GASLIFT COH - CENTER OF HELIX |
|---|--|

REFERENCE DRAWINGS/DOCUMENTS

[illegible]

CONTRACTOR :

LEIGHTON CONTRACTORS INDIA Pvt. Ltd.

PROJECT :

TITLE : SJ PLATFORM
PIPELINE APPROACH AND DEPARTURE
(RIGID PIPELINE)

SCALE	DRAWING NUMBER	REV.
1 : 250	I0182-S2-PL-ENG-DWG-21401	1